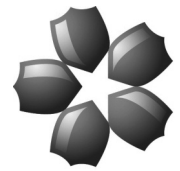


# astra®

DOOR CONTROLS



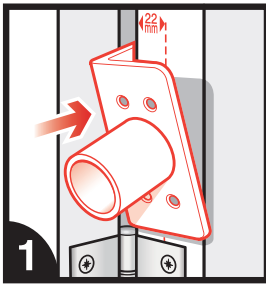
**ISOQAR**

REGISTERED

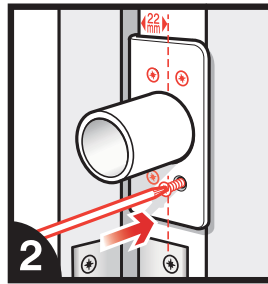
Cert No 5893  
ISO 9001

## 4000 SERIES INSTALLATION INSTRUCTIONS

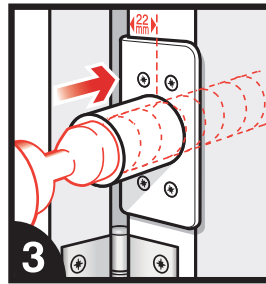
### INSTALLING YOUR DOOR CLOSER USING FITTING JIG AST9002 (Not Supplied)



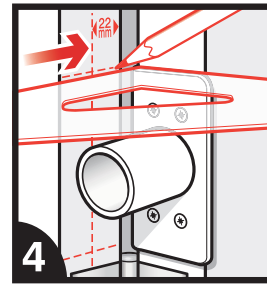
1 Offer up the fitting jig to the door leaf with the lip on the knuckle side of the door just below or above the middle hinge. The centre line should always be 22mm from the knuckle side of the door.



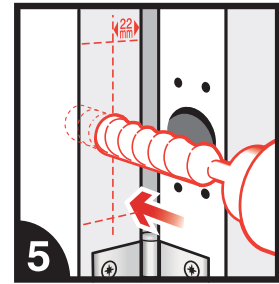
2 Fix using 4 screws.



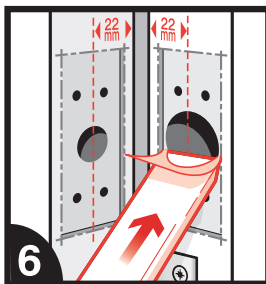
3 Drill the hole for the closer body using the auger bit. Do not drill to excess, the door control should be a snug fit.



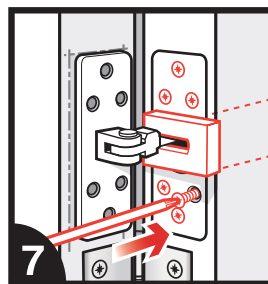
4 Mark the top and bottom edges level and square across to the door frame. Mark a centre line 22mm from the knuckle side of the frame.



5 Drill out a centre hole 15mm diameter to a depth of 10mm.



6 Cut out the area required to house the fixing plates on both the door leaf and the door frame.



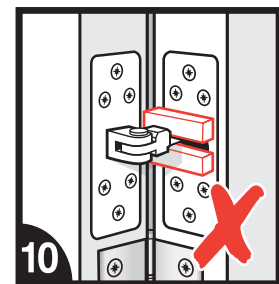
7 Insert the body of the closer into the door leaf, with the retaining plate facing you, and screw fix.



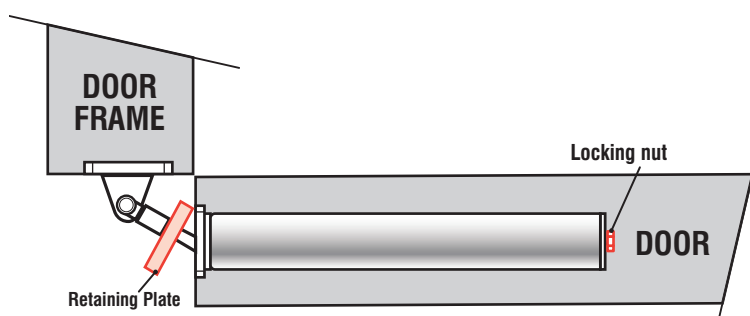
8 Fix the plate onto the door frame making sure it is exactly in line with the other plate.



9 Remove the retaining plate. Ensure that it is kept in a safe place in case it is necessary to remove the closer from the door at any time.



10 Installing the closer the wrong way will result in failure and is not covered by any warranty or guarantee.  
**Note: The 'Astra England' stamp may be upside down, depending on the handing of the door.**

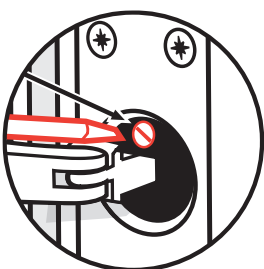


### ADJUSTING THE DOOR CLOSING SPEED

Once installed, the closing speed may be adjusted.

A closing speed adjustment pin is located inside the body of the closer, above or below the fixing link. The closing speed can be altered by opening the door to 90° and turning the adjuster pin with a small flat screwdriver clockwise to decrease speed or anticlockwise to increase speed. When adjusting the closing speed, please be aware that very slow settings may effect the performance of the closer. It is recommended not to set a closing speed of less than 6 seconds.

For Declaration of Performance see [www.astradoorcontrols.com](http://www.astradoorcontrols.com)



*astra*<sup>®</sup>  
DOOR CONTROLS

## 4000 SERIES

### INSTALLATION INSTRUCTIONS



#### IMPORTANT PLEASE READ THESE NOTES BEFORE INSTALLATION

- After fitting the door closer these instructions and the retaining plate should be kept in a safe place and referred to before any work on the door is carried out. It is dangerous to remove the closer plate screws without first placing the retaining plate in position.
- You are advised to use an approved installer when fitting or removing this product. It is potentially dangerous to remove or tamper with this product.
- Poor ventilation and limited air flow may, like other closers, affect the performance of this closer. A suitable latching device may help door latching, but we accept no liability for the performance of the closer in these circumstances.
- It is important that the door hinges and associated fittings are correctly installed and do not affect the ability of the closer to close and latch the door.
- All doors must be fitted with a pair and a half of fire tested EN1935 approved hinges.
- The door closer is designed to open to a maximum of 105° when installed with the centre line of the plate 22mm from the hinge edge of the door. When installing the closer in a thicker door the centre line of the plate must remain at 22mm from the hinge edge to allow for 105° opening.
- Do not fit in conjunction with rising butts or parliament hinges. Hinges with any projection greater than 10mm will result in a reduced angle of opening
- The screws supplied are not necessarily the appropriate screws for the installation. It is the installers' responsibility to ensure correct fixing is applied. Piloting holes too large for the screws could result in the door closer pulling out of the door and the frame.
- It is essential that fixing plate centres are exactly in line with each other when the door is closed and each plate is recessed flush into the door and frame. The gap between the fixing plates when the door is closed should be no greater than 5mm and no less than 3mm.
- Please refer to the website [www.astradoorcontrols.com](http://www.astradoorcontrols.com) for installation video and advice. Fitting jigs and auger bits are available from approved stockists and Astra Door Controls Ltd.

**Astra Door Controls Ltd, Preston PR2 5AP, England** [www.astradoorcontrols.com](http://www.astradoorcontrols.com)