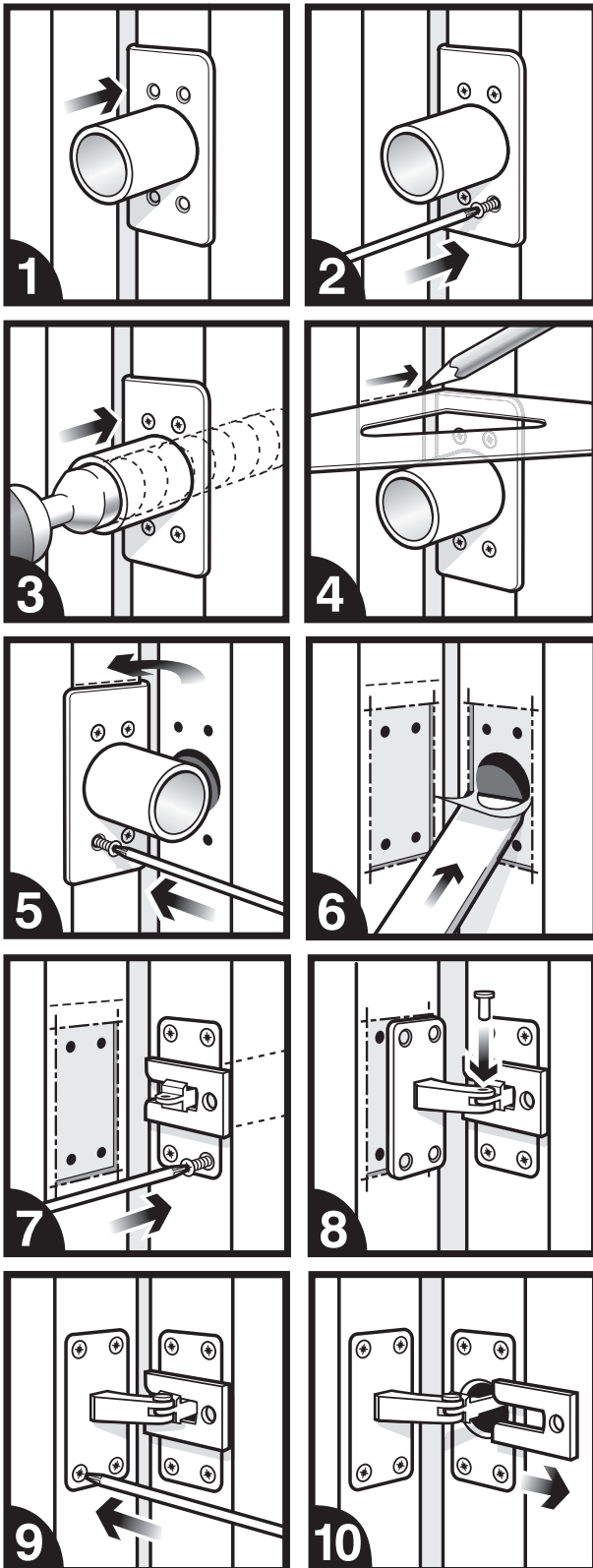


## FITTING INSTRUCTIONS USING AST9002 JIG



1. OFFER UP THE PLASTIC TEMPLATE TO THE DOOR LEAF WITH THE LIP ON THE KNUCKLE SIDE OF THE DOOR JUST BELOW OR ABOVE THE MIDDLE HINGE.
2. FIX USING 4 SCREWS FROM YOUR ASTRA CONCEALED DOOR CLOSER.
3. DRILL THE HOLE FOR THE CLOSER BODY USING THE LEWIS AUGER BIT SUPPLIED.
4. MARK THE TOP EDGE LEVEL AND SQUARE ACROSS TO THE DOOR FRAME.
5. REMOVE THE PLASTIC TEMPLATE AND, TURNING THROUGH 180°, OFFER UP TO THE DOOR FRAME WITH THE LIP ON THE KNUCKLE SIDE OF THE FRAME, USING YOUR LINE AS A GUIDE AND FIX WITH 4 SCREWS FROM ASTRA CONCEALED DOOR CLOSER.
6. USE THE FACE PLATE PROVIDED TO MARK AND CUT OUT THE AREA REQUIRED TO HOUSE THE FIXING PLATES ON BOTH THE DOOR LEAF AND THE DOOR FRAME.
7. INSERT THE BODY OF THE CLOSER INTO THE DOOR LEAF, WITH THE RETAINING PLATE FACING YOU, AND FIX.
8. ATTACH THE DOOR FRAME FIXING PLATE TO THE BODY OF THE CLOSER USING THE TOP-HAT PIN SUPPLIED.
9. FIX THE PLATE ONTO THE DOOR FRAME MAKING SURE IT IS EXACTLY IN LINE WITH THE OTHER PLATE.
10. REMOVE THE RETAINING PLATE. ENSURE THAT IT IS KEPT IN A SAFE PLACE IN CASE IT IS NECESSARY TO REMOVE THE CLOSER FROM THE DOOR AT ANY TIME.